

## ⇒ Home Escape Plan

A smoke alarm will alert you, but you still need to escape the fire.

Make sure that you have an escape plan to help you get out of your home.

⇒ Plan two ways out of every room

⇒ Choose a meeting place outside

⇒ Call the fire department from outside your home

⇒ Practice your plan!! Practice!  
Practice!



When was the last  
time you checked the  
operation of your  
smoke alarms ???

Any smoke alarm is better than no smoke alarm. When you are replacing your smoke alarms consider changing to dual detection smoke alarms--ionization/photoelectric.

Although both will detect smoke, ionization detects rapid burning fires more quickly, and photoelectric detect smoldering fires more rapidly.

🔥 **Replace** smoke alarms that are 10 years or older

🔥 **Replace** smoke alarm batteries when changing clocks in the fall and spring, or as needed.

🔥 **Test** smoke alarms once a month.

**DO NOT wait for a fire in your home--  
-test your smoke alarm today and  
develop an escape plan TODAY!!**

TOLEDO  
FIRE &  
RESCUE  
DEPARTMENT

[www.ToledoFireRescue.com](http://www.ToledoFireRescue.com)

CALL OUR FIRE PREVENTION BUREAU  
TO FIND OUT MORE ABOUT OUR  
SMOKE ALARM PROGRAM

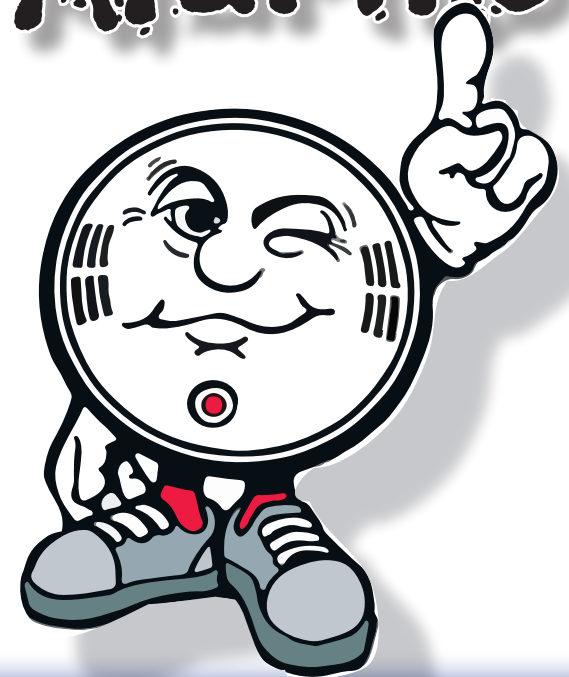
**Fire Prevention Bureau**

One Government Center, Ste. 1710

Toledo, Ohio 43604

419.245.1140

# Working Smoke Alarms



***Can save you  
and your family***



# What are the requirements in the City of Toledo?

Smoke alarms are required in all new and existing residential structures according to Toledo Municipal Code 1301.11. The property owner is responsible for the installation of smoke alarms, and the occupant/renter is responsible for maintaining the batteries, if battery operated.

## Installation-Where Do I Put'em?

Placement of smoke alarms in one, two, and three family dwellings: a minimum of one smoke alarm must be installed on each level of the structure, such as the basement, first floor, etc. In addition, at least one smoke alarm is required in each sleeping area. In residential structures greater than three-family, a minimum of one smoke alarm must be installed in each sleeping area.

When installing smoke alarms in new residential structures, the alarm must be wired directly into the electrical system. Electrical permits must be obtained from the City of Toledo Division of

Inspection before installation. In existing residential structures, smoke alarms can be wired directly into the electrical system, or battery operated.

Make sure to follow the manufacturer's directions as to location and placement where they do not conflict with Toledo Municipal Code.

## Maintenance-Keep'em clean & workin'

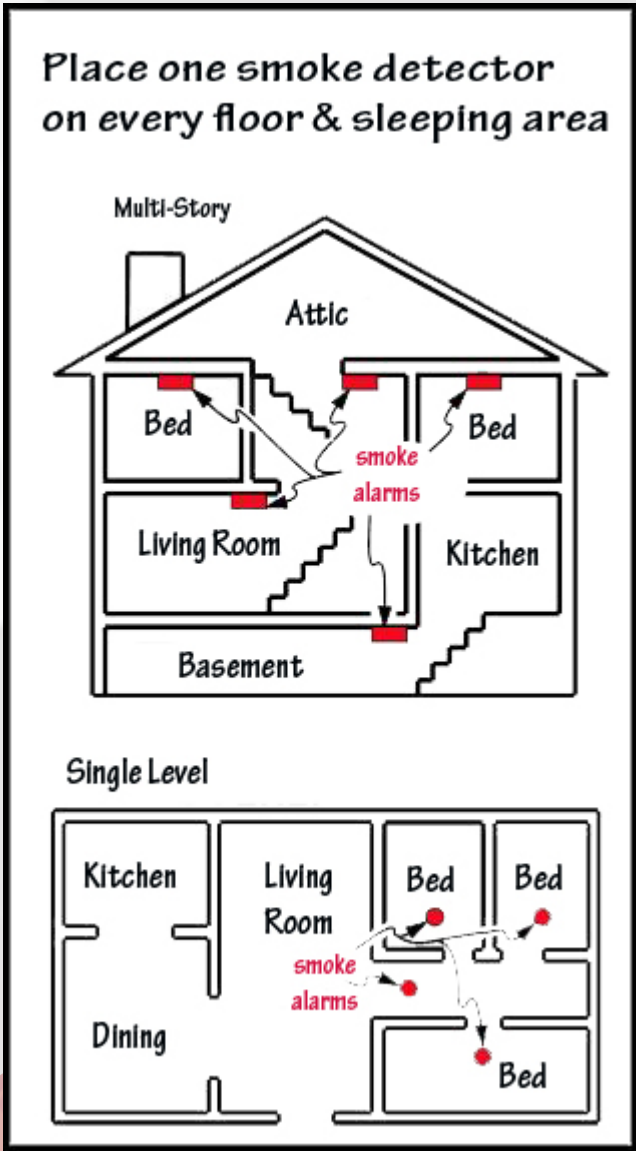
Occupants/renters living in residential structures are responsible for battery replacement in battery operated smoke alarms. Property owners are responsible for all maintenance of smoke alarms other than battery replacement. Tenants cannot remove or render a smoke alarm inoperative.

Never paint smoke alarms, and, keep them free from dust and cobwebs.

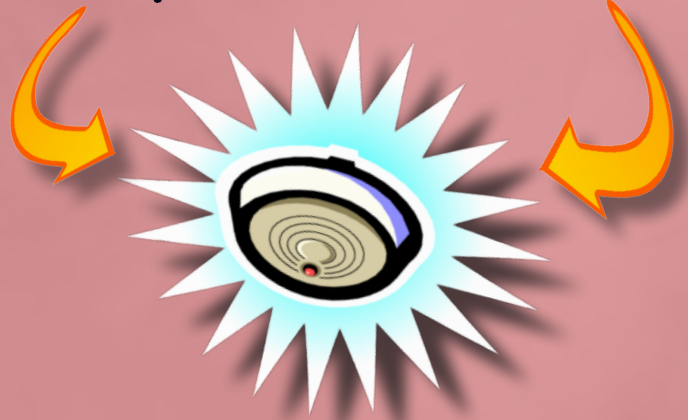
**Smoke Alarms can Save Your Life**

## Placement-Here it is in Pictures

Place one smoke alarm on every floor and every bedroom, or sleeping area.



**You Need These In Your House To protect Your Family!**



## Installation Tips-These might help!

- 🔥 Install smoke alarms at least 6 inches away from where the wall and the ceiling meet.
- 🔥 Avoid locating smoke alarms in front of air vents, or between the bedroom and cold air return.
- 🔥 Avoid installing smoke alarms on a ceiling that is substantially warmer or colder than the rest of the room.
- 🔥 Use only U.L. approved smoke alarms, following the manufacturers instructions as to location and placement when they do not conflict with Toledo Municipal Code.
- 🔥 Check the batteries in your smoke alarm on a weekly basis.